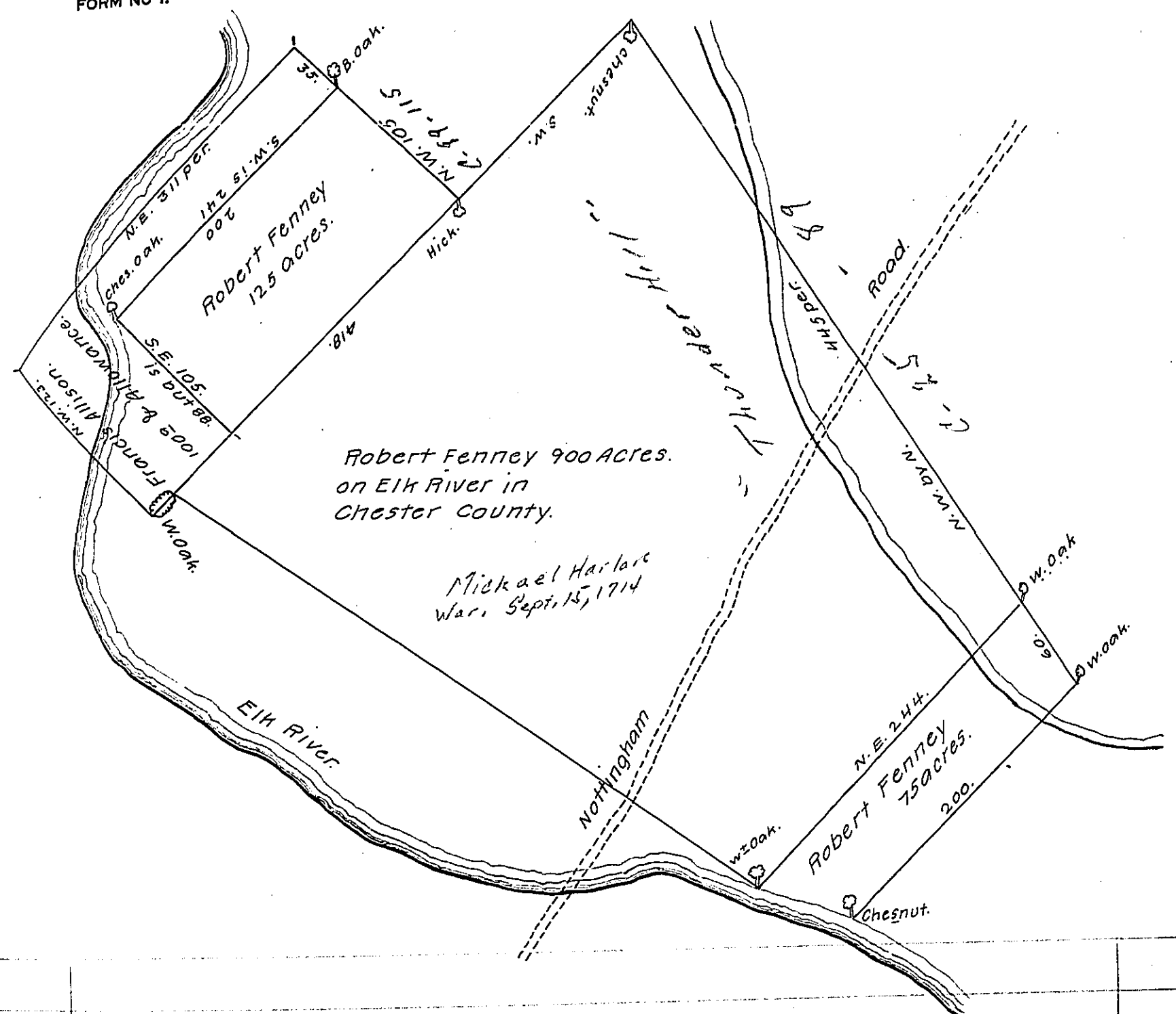


FORM NO 1.



The three Tracts
 Contain 1100 Acres.

The Tract of 900 acres was sur-
 vey'd the 14th of 8^{br} 1714. The 200
 was survey'd the 10^(th) of May, 1720.

Upon the request of Robt Finny he is allowed to hold two parcels of
 Land added to each end of his Tract of 900 acres, which said two parcels
 contain together two hundred acres as also about one hundred & fifty Acres
 to be laid out to him on the north east side of the Tract he applying to the
 Proprietors office for a regular Grant when the same may be had

Philad^a 11th 2^{mo} 1727.

James Steel

IN TESTIMONY that the above is a copy of the original remaining on file in
 the Department of Internal Affairs of Pennsylvania, made
 conformably to an Act of Assembly approved the 16th day of
 February, 1833, I have hereunto set my Hand and caused
 the Seal of said Department to be affixed at Harrisburg,
 this eighth day of November, 1907.

Newry Howell
 Secretary of Internal Affairs.